

Healthy Families Florida Five Year Evaluation Report

Prevent Child Abuse America Conference
San Diego
May 20-24, 2006



Williams, Stern & Associates

From data to intelligent action in health services

Adapted by

Mary Kay Falconer, Ph.D.



Ounce of Prevention Fund of Florida

Scope of the HFF Evaluation

- January 1, 1999- December 31, 2003
(Final Report February 28, 2005)
- Statewide Evaluation (All projects)
- Formative and Summative Annual Evaluations
- HFF Central Office Included
- Web-Based Information Management System
(HFFTS)

Participant Profile in the Evaluation

- HFF served 22,708 families as of 12/31/2003
- 71% - Never Married
- 44% - Black, 31% - White, and 22% - Hispanics
- 57% - Less than a High School Education
- 90% - At or Below 200% of the Poverty Level
 - Of these, 11% were on WAGES (Florida TANF)
- Average score on HFF Assessment Tool was 25
- 44% - Enrolled pre-natally

Child Maltreatment Findings and Outcomes

- Lower child maltreatment rates among families who completed the program or had a high dosage of service (IMPACT Analysis)
- Lower child maltreatment rate for HFF participants compared to general population in high-risk target areas
- Met the goal (95%) for no maltreatment within the 12 months following program completion
- Close to the goal (95%) for no maltreatment during participation in HFF (92% free of maltreatment)

Comparison Groups in the Quasi-Experimental Design for Impact Analysis

- **Comparison (Low Service) Group**
 - Families with less than three months of HFF services
- **No HFF Service Group (Control Group)**
 - Families not served due to program being at situational or actual capacity
 - Families assessed between 1/1/2000 and 12/31/2002
 - Vital statistics records used to obtain identifying information
- **Completers Group**
 - Families completing program between 1/1/1999 and 12/31/2003
- **High Fidelity Group (High Service) Group**
 - Families who were enrolled at least 3 years, received 75% of home visits, on Level X less than 3 months

Selected Impact Analysis Findings

- **No Service Group vs. Completers Group**

During the first 2 years of their lives, children in families receiving no HFF service were nearly 4 times more likely to have been victims of maltreatment than children in families that completed HFF.

- **No Service Group vs. High Fidelity Group**

During the first 2 years of their lives, children in families receiving no HFF service were nearly twice as likely to have been victims of maltreatment compared to children in families that received intensive services over a 3 year period.

- **Comparison Group vs. Completers Group**

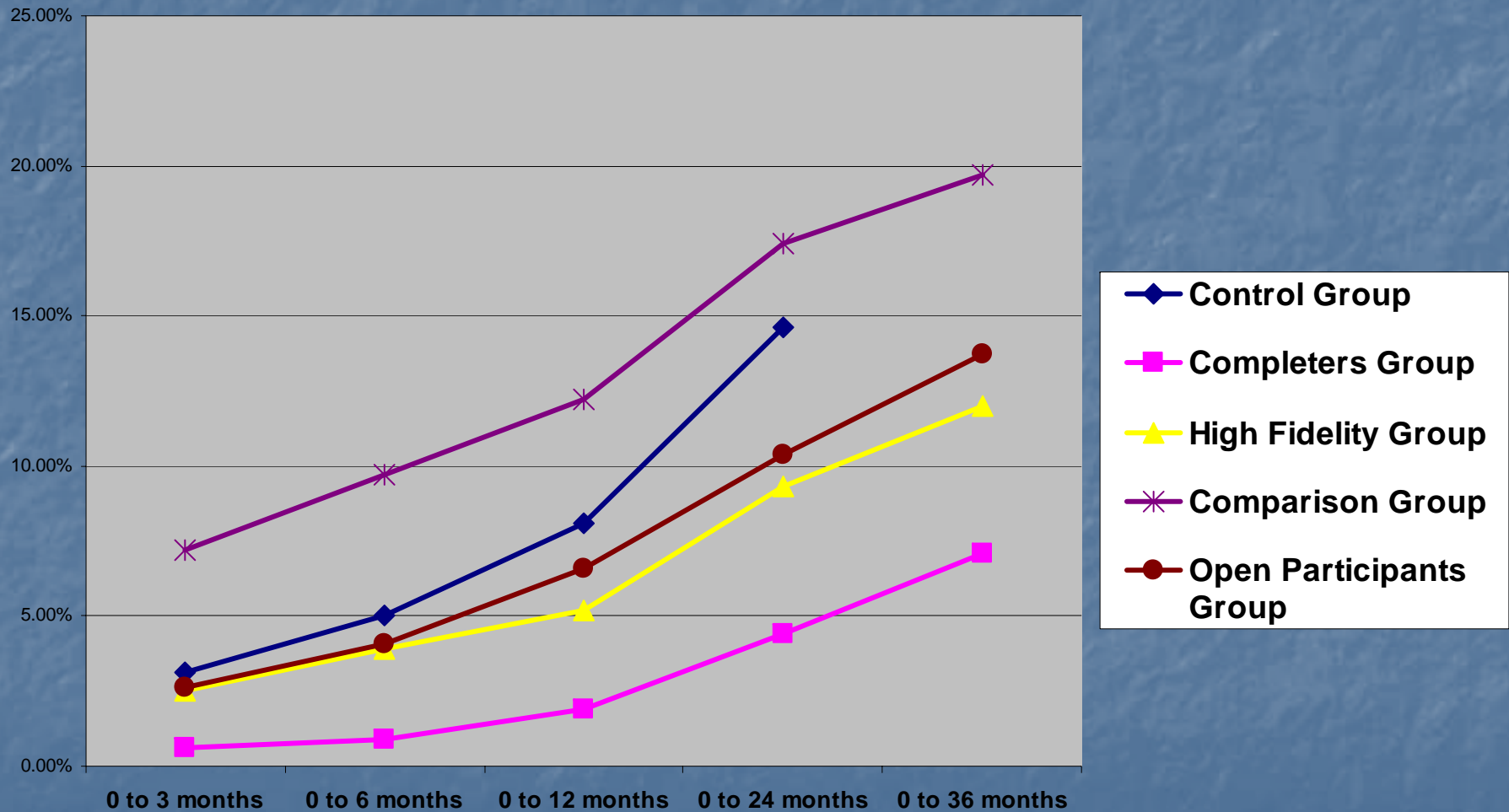
During the first 3 years of their lives, children in families that received very little HFF service were 3 times more likely to have been victims of maltreatment compared to children in families who completed HFF.

Odds Ratio Table of Maltreatment by Age of Child between Comparison Groups

Age of Child	No HFF Service vs.		Comparison vs.	
	High Fidelity	Completers	High Fidelity	Completers
Up to 6 mos	1.3	5.7	2.7 ***	11.8 ***
Up to 12 mos	1.6 *	4.5 ***	2.5 ***	7.0 ***
Up to 24 mos	1.7 *	3.7 ***	2.0 ***	4.6 ***
Up to 36 mos	n/a	n/a	1.8 *	3.2 **

*p<.05, **p<.01, ***p<.001

Graph of Child Maltreatment by Age of Child by Comparison Groups



HFF Assessment Tool Factors associated with Child Maltreatment

- No child maltreatment
 - No prior CPS report made on parent
 - Stopped smoking
- Child maltreatment
 - Prior CPS report made on parent
 - Inability to meet basic needs
 - Substance abuse
 - Current victim of domestic violence

Social and Demographic Factors and Child Maltreatment

Child Social and Demographic Factors

- Boys more likely to be maltreated than girls
- Younger children more likely to be maltreated than older children
- Target children more likely to be maltreated than non-target children (target children are younger)
- Children with severe developmental delays were twice as likely to be maltreated

Self-Sufficiency Finding

(Included matching HFF participants with employment data in Florida)

HFF completers were 1.5 times more likely to be employed after 3 years of enrollment than those in the comparison group.

Findings based on Analysis of Other Outcomes using Telephone Survey Data

- Parent-Child Interaction

Telephone treatment group members were more likely to read to their children than those in the telephone comparison group.

- No significant differences between telephone groups for other outcomes (immunizations, child development, child health care, parent-child interaction, parenting attitudes, and maternal health).

Selected HFF Program Process Measures

- 80% of all assessments must occur either pre-natally or within the first 2 weeks after the birth of the child (89%)
- 75% of families enrolled in the program will have received their initial home visit within 30 days after assessment (67%)
- 80% of families will have received at least 75% of home visits according to the participant level (74%)
- Projects will show an improvement in their annual retention rate if below the established statewide median of 69% (70%).
- Other process measures refer to linking family to medical providers, developing and updating the family support plan, and completing child developmental assessments.

HFF Program Goals and Outcomes

■ Immunizations

- 88% of target children were up-to-date at 6 months of age.
- 90% of target children were up-to-date at 12 months of age.
- 93% of target children were fully immunized by age 2. (Florida was 77% and the U.S. was 76%.)

■ Subsequent Pregnancy

- 92% of mothers enrolled in the program did not have a subsequent pregnancy within two years of the target child's birth.

HFF Program Goals and Outcomes

■ Well-Baby Checks

- 87% of target children were up-to-date at 6 months of age.
- 89% of target children were up-to-date at 12 months of age.
- 88% of target children were up-to-date at 24 months of age.
- 90% of target children were up-to-date at 36 months of age.
- 93% of target children were up-to-date at 48 months of age.

■ Satisfaction with Services

- 98% of participating families report an overall satisfaction with the services they receive.

Critical Element Highlight Intervention is Long-Term

- Retention
 - 72% enrolled for six months
 - 50% for 1 year
 - 30% for 2 years
 - 20% for 3 years
- Average Length of Service for participants is 14 months
- Average Length of Service for Completers is 3.6 years

Factors Related to Retention

Shorter Length of Stay

- High HFFAT Score (between 30% and 34% of participants had experienced abuse or neglect as a child and/or had parents who were substance abusers and/or parents who were mentally unstable)
- Race/Ethnicity – White, non-Hispanic

Longer Length of Stay

- Older participants
- Fewer adults in household
- Race/Ethnicity – Black, non-Hispanic
- Married
- Less than high school education

Critical Element Highlight Intervention is Intensive

Families Receiving Required Home Visits by Level

	2003 Report 75% of Visits Expected	Final Report 75% of Visits Expected
Level 1 (weekly)	48%	51%
Level 2 (alternating wks.)	73 %	77 %
Level 3 (monthly)	78 %	95 %
Level 4 (quarterly)	99 %	99 %

HFF Evaluation in the Policy Arena

- Governor's Budget Released in January 2005 (HFF Full Funding at \$28.4 Million)
- Evaluation Findings presented to the HFF Advisory Committee, February 11, 2005
- Initial Legislative Budget Released in late March, 2005 (Potential Decrease of \$15 million)
- Governor's Press Conference on April 7, 2005
 - Participation of Mother from HF Pasco County
 - Positive Results in External Evaluation

HFF Evaluation in the Policy Arena

- Legislative Budget in Conference, end of April 2005 (HFF full funding restored with general revenue replacing non-recurring source)

Lessons Learned

- On-going Evaluation Over 5 Years Contributed to Program Improvement
- Advocacy + Positive Evaluation Findings = Strong Support for HFF

After the Evaluation: Subsequent HFF Performance Monitoring and Evaluation Research

- **HF Program Managers discussed evaluation findings/challenges and proposed strategies**
- **HFF development of Strategic and Action Plan with the formation of Quality Improvement Groups** (2 groups this fiscal year, one on leveling criteria and the other on measure of self-sufficiency)
- **Program Performance Monitoring** (process and outcome measurement continues, including maltreatment outcomes)
- **On-going Research** (engagement and retention research by Research Unit in Ounce of Prevention Fund of Florida)